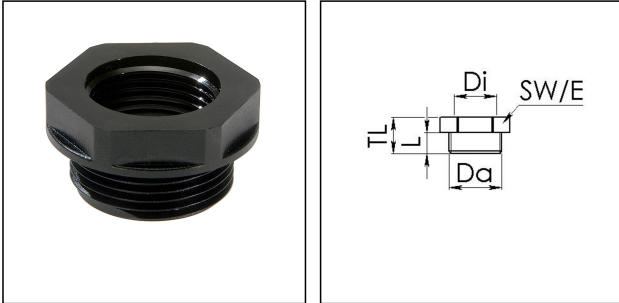


## EX-KRM 50/25

Ex-reduction adaptor, polyamide, M50-M25



Products may differ in size, colour and appearance to those shown. If you require further information or customisation, please contact us directly.



Material	Polyamide, fibre reinforced
Temp. range min	-40 °C
Temp. range max	75 °C
Protection class	IP66 / IP68 (5 bar 30 min)
Marking	II 2 D Ex tb IIIC Db, II 2 G Ex eb IIC Gb
Approval	PTB 04 ATEX 1040 X, IECEx PTB 16.0026X
Thread type outer	M
Ø outer thread	50
Lead outer	1,5
Length screw-in thread L	14 mm
Thread type inner	M
Ø inner thread	25
Lead inner	1,5
Key width SW	55 mm
Collar diameter (E)	61 mm
Total length TL	21 mm
Form	B
Product Color	RAL 9005
Order no. RAL 9005	10064733
Type	EX-KRM 50/25
Packing unit	5
ETIM-Classification	EC000938

Your Contact:

WISKA Hoppmann GmbH

Kisdorfer Weg 28 · 24568 Kaltenkirchen · Germany

☎ +49-4191-508-0 · 📠 +49-4191-508-209

contact@wiska.de · www.wiska.com

**Recommended accessories**

**EMUG 50**



10061786

10.01.2020

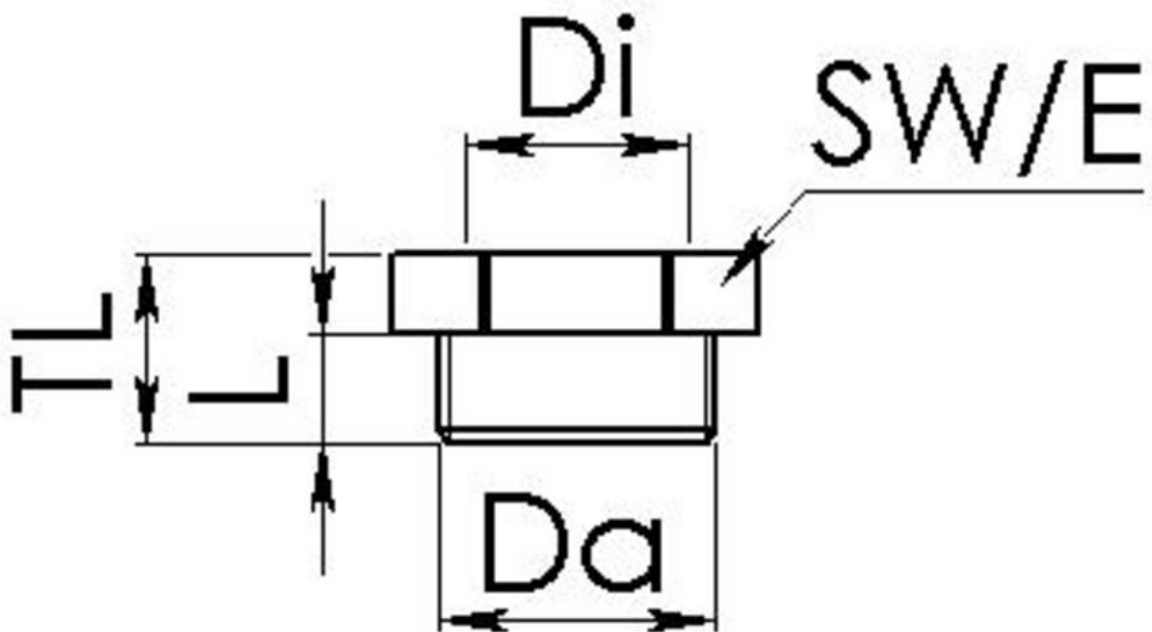
Your Contact:

**WISKA Hoppmann GmbH**

Kisdorfer Weg 28 · 24568 Kaltenkirchen · Germany

 +49-4191-508-0 ·  +49-4191-508-209

[contact@wiska.de](mailto:contact@wiska.de) · [www.wiska.com](http://www.wiska.com)



Your Contact:

**WISKA Hoppmann GmbH**

Kisdorfer Weg 28 · 24568 Kaltenkirchen · Germany

☎ +49-4191-508-0 · 📠 +49-4191-508-209

contact@wiska.de · www.wiska.com